


A Place to Unwind

**A Floridian heads north to discover
the peace and tranquility of logs...
four times over.**

story by Margaret Foster | photography by Rich Frutchey

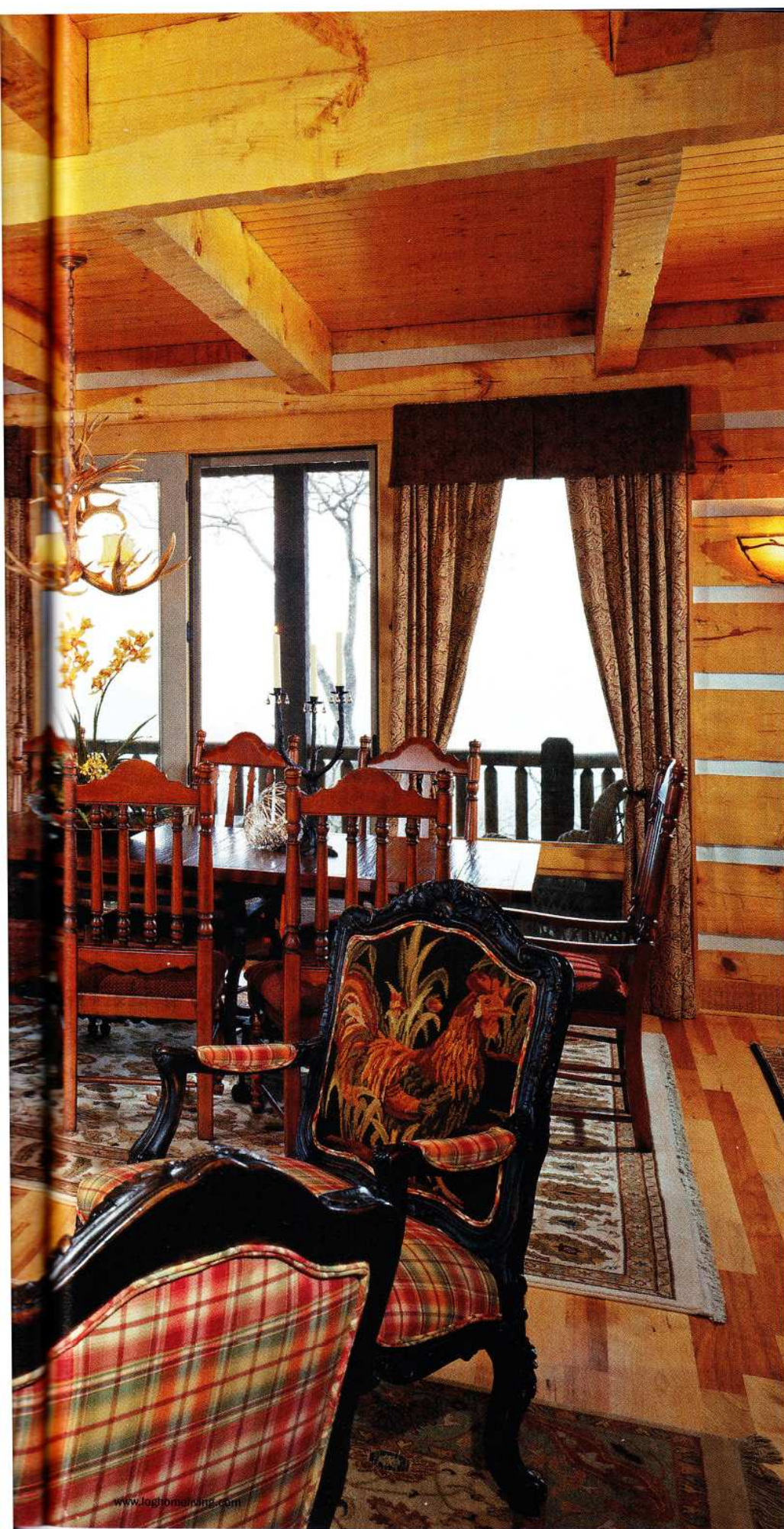
A photograph of a log cabin interior. The walls are made of horizontal wooden planks. In the foreground, there are two large, tufted leather armchairs in a warm brown color. Between them is a small, round, dark wood side table with a lamp that has a large, cream-colored shade and a decorative base. A dark, shaggy fur throw is draped over the left chair. In the background, a large window with patterned curtains looks out onto a snowy landscape. On the balcony outside, there are two wicker rocking chairs and a small table with a vase of flowers. A lantern-style light fixture is visible on the left side of the window.

OPPOSITE: A simple, split-rail fence gives Randy Jones' 5,400-square-foot home built with hand-hewn Eastern white pine logs a modesty that the Maggie Valley, North Carolina, Smoky Mountain Retreat community cultivates. "We try to make our houses mountain-friendly," says Scott Campbell of Campbell Construction. "We've taken a large home, nestled it into the woods and haven't offended anybody."

THIS PAGE: Comfy leather chairs paired with an antique lamp and hickory floors give the home a casual elegance. "Nothing is so dressy that you feel uncomfortable," says interior designer Char McNamara.

Classic and funky styles mingle on the main level. "We have period pieces that have a rustic or antique finish, but we've interspersed black-and-white hides and fur, so it's an interesting combination," Char says.





For Floridian Randy Jones, the fourth time's the charm. Randy built his first log home nine years ago. Then he built three more. Finally, he's created his ideal vacation home, complete with an indoor waterfall.

"I've always thought log homes were intriguing and relaxing," Randy says. "When I walk inside a log home, it's just tranquil. Your blood pressure drops."

A friend lured Randy to Maggie Valley, a log-home community in North Carolina, and as Randy stood on an empty lot overlooking the Smoky Mountains, he was immediately won over. "I said, 'This is it,'" he says. "It's developed, but not over-developed. That impressed me."

After Randy built his first two log homes, he changed his tack. "Instead of extremely rustic, I decided to go with an upscale log home," Randy says. He noticed builder Scott Campbell's work in the community, and the two hit it off over their shared outlook of what log homes can be.

"Most people think log homes have to be rustic, and they don't," Scott says. "You can take a rustic flavor and polish it up."

It took just 10 months to complete Randy's five-bedroom, four-and-a-half-bath home with a two-level covered deck, and a lower-level "playroom" with a poker table, roulette wheel, media room and cantina.

"It was a team effort," Scott says. "If it weren't for all the subcontractors, vendors and local businesses in town, we couldn't have built the home."

During construction, Randy turned to his cadre of trusted local experts to outfit the interior, including cabinetmaker Darrell Mathis of Pine Custom Cabinets and designer Char McNamara, whose refined but low-key philosophy is evident in every room of the home.

"We wanted it to be elegant but casual," Char says. "The minute you enter, it's inviting and not intimidating."

Randy designed the expansive kitchen, which, as in most homes, is the main gathering place. With commercial ranges, double dishwashers, distressed



knotty alder cabinets and plenty of counter space, the kitchen is not only impressive but comfortable. "On Thanksgiving, there must have been five cooks in the kitchen, and nobody got in anyone else's way," Char remembers.

As for the focal point of the house—the

rushing waterfall next to the native stone fireplace—Randy says that it's a great place to unwind.

"You've got fire and water together," he says of the two elements, which balance each other out. "The whole house is incredibly relaxing." ■

The rush of the illuminated waterfall, a 6-foot-tall opening carved into the native stone hearth, can soothe even the most stressed visitor. Randy and interior designer Char McNamara, hatched the plan, and builder Scott Campbell brought the dream to life.



ABOVE: With commercial ranges, double dishwashers, custom cabinets and plenty of counter space, the kitchen dazzles even its owner. Local cabinetmaker Darrell Mathis of Pine Custom Cabinets built the black distressed knotty alder cabinets, which complement and contrast with the home's Eastern white pine logs. Interior designer Char says the countertops were an excellent choice: "When sunlight hits it, it comes to life with lots and lots of sparkles."

RIGHT: With four bedrooms and one bunkroom in the loft, the house sleeps 14 people. Each bedroom has its own covered, furnished deck, some of which have an outdoor fireplace.





ABOVE: A modern corner tub paired with an Oriental rug creates the elegant but casual aesthetic that permeates every room in the home.

RIGHT: Wicker furniture paired with whimsical place settings provides a casual dining atmosphere on the deck.

home details

SQUARE FOOTAGE: 5,400

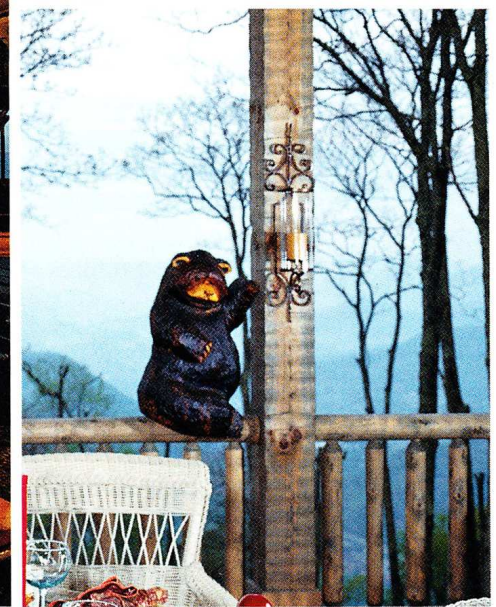
BUILDER: CAMPBELL
CONSTRUCTION

LOG COMPANY: TOP NOTCH
LOG HOMES

**FOR MORE INFORMATION,
SEE RESOURCES ON PAGE 66**



design details



CLOCKWISE FROM TOP LEFT:

A peep-through space between cabinets in the kitchen opens up the cooking space to the rest of the great room; a carved wooden bear mounted on the deck rail is a whimsical reminder of cabin life; period furniture pieces are upholstered in a brave mix of texture, color and pattern in the living room, setting the stage for the truly unique decor; the hearth features a mix of stone shapes laid to create a subtle variety and visual interest in the great room.